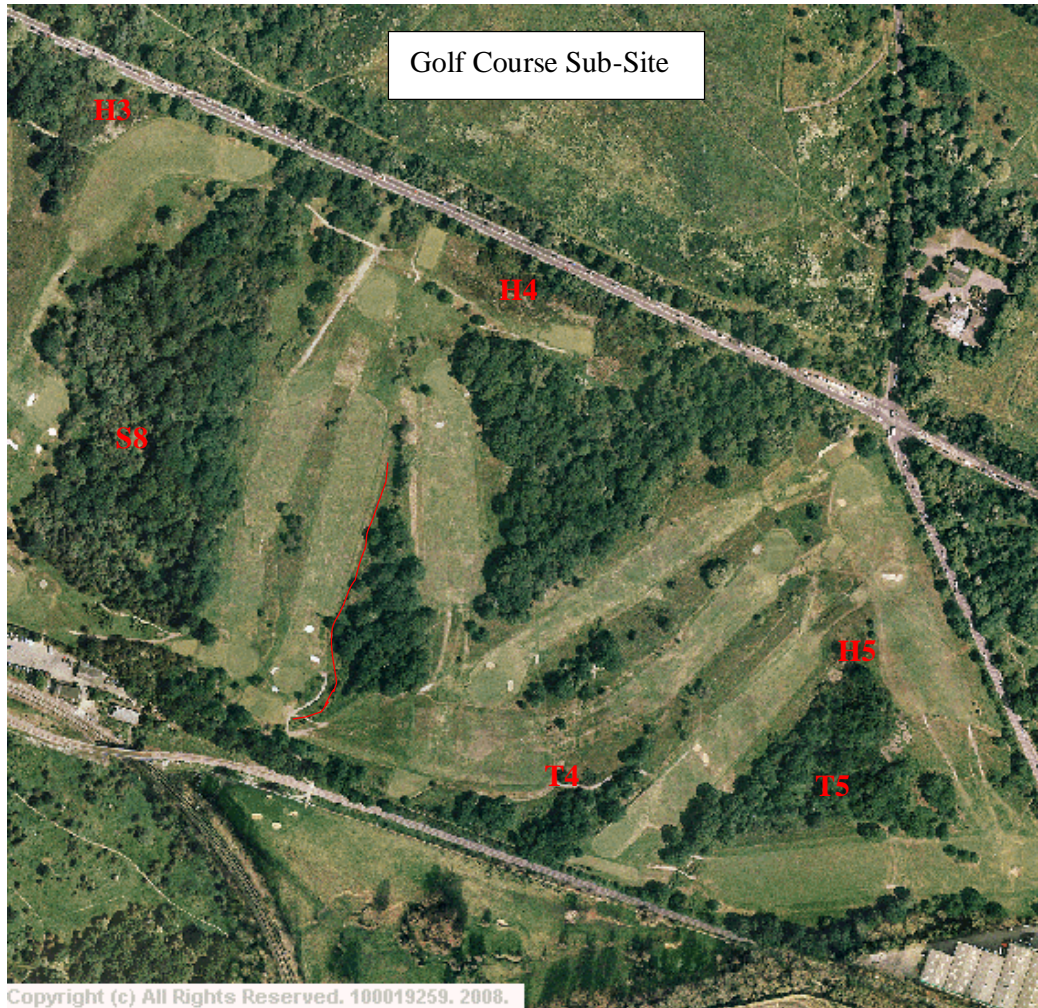


**MITCHAM COMMON WORK PROGRAMME  
OCTOBER-DECEMBER 2008**



<b>Seven Islands Pond Sub-Site</b>		
<b>Site No. /Code (see map)</b>	<b>Description of Work Task</b>	<b>End of month to be completed</b>
SIP	Desilt Seven Islands Pond including coppicing willow on large islands and clear poplar suckers from banks of pond.	Oct
R1	Scrub clearance (gorse/birch) encroaching into acid grassland (LWT)	Nov/Dec
R3	Lift lower branches of oak trees shading acid grassland and remove encroaching gorse	Nov/Dec
S1	1 Cut and remove arisings from scallops and clear any developing scrub from scallops.	Oct/Nov
	2 Spray bramble in glade and scallop	Oct/Nov
T1	Bramble and scrub control	Nov/Dec
<b>Mill House Sub-site</b>		
H1	Small-scale selective coppicing of gorse and clearance of other scrub. Control any woody vegetation on new scrape	Nov/Dec
1	Gap-up tree planting	Nov/Dec
2	Clear encroaching scrub from acid grassland	Nov/Dec



<b>Golf Course Sub-Site</b>		
<b>Site No. /Code(see map)</b>	<b>Description of Work Task</b>	<b>End of month to be completed</b>
H3, H4, H5	Small-scale selective coppicing of gorse and clearance of other scrub	Nov/Dec
S8	Flail glade (golf course staff)	
T4	Clear encroaching scrub from margins of pond and cut and clear all herbaceous vegetation	October
T5	Cut and clear herbaceous vegetation and reduce encroaching scrub around path leading to pond. Cut back vegetation along ditchline	October
Red line	Cut and clear non-adjacent sections of ditch and banks	October



Mill Green & Gunsite Sub-Sites		
Site No. /Code (see map)	Description of Work Task	End of month to be completed
S12	Cut and rake off clearings in centre of plantations	October
	Flail vegetation on southern edge of plantation	October
R12 1	Cut and remove arisings from flower-rich area. Clear bramble and push back leading edge of scrub	October
2	Cut and remove arisings from flower-rich area and clear scrub	October



<b>Bidder's Pond Sub-Site</b>		
<b>Site No. /Code (see map)</b>	<b>Description of Work Task</b>	<b>End of month to be completed</b>
Bidder's Pond	Mow pond margins	October
R7	1 Clear encroaching scrub from acid grassland	
	2 Prune damaged trees	
	3 Clear encroaching poplars from uncommon plant stands	
T3	Clear encroaching bramble and scrub, cut and rake off herbaceous vegetation	October
<b>One Island Pond Sub-Site</b>		
N6	Selectively coppice 25% willow scrub	Nov/Dec
U5	Mow 1/3 of herbaceous vegetation	October
U5/N6	Prune damaged trees on west-facing bank	Nov/Dec

<b>Tree Works</b>		
Mill House	Fell several poplar trees on bank adjacent to overspill car park and stump grind.	
Gunsite	Clear and ground fallen oaks in woodland	
Gunsite	Prune back poplars overhanging road opposite Drake Road	
Carshalton Road	Co-pollard two willow trees	
Commonside East	Re-pollard poplar tree	
Commonside East	Reduce poplar trees near Arthur's Pond	
Seven Islands Pond	Fell poplar suckers around edge of pond and stump grind?	

<b>Other Tasks</b>		
<b>Site No. /Code</b>	<b>Description of Work Task</b>	
<b>N/A</b>		
	Litter-pick edges of ponds and surrounding areas	Weekly
	Clean interpretive panels, byelaw signs etc	Once/6 weeks
	Empty litter bins	Twice monthly
	Litter-pick Mill Green	Monthly
	Litter-pick Willow Lane hoggin paths (if not done by LBM)	Monthly
	Litter-pick Aspen Gardens hoggin path	Monthly
	Litter-pick Red House Road to Brookmead Road path	Monthly
	Litter-pick area from BP garage to Southampton Gardens/Galpins Road	Monthly
	Litter-pick Commonside East verge up to woodland edge, between Windmill Road and Cedars Avenue	Monthly
	Litter-pick Windmill Road	Monthly
	Other hotspots as required	